

320

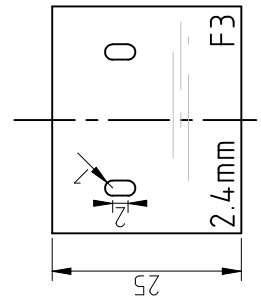
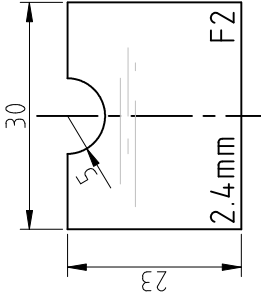
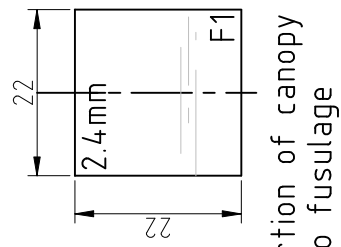
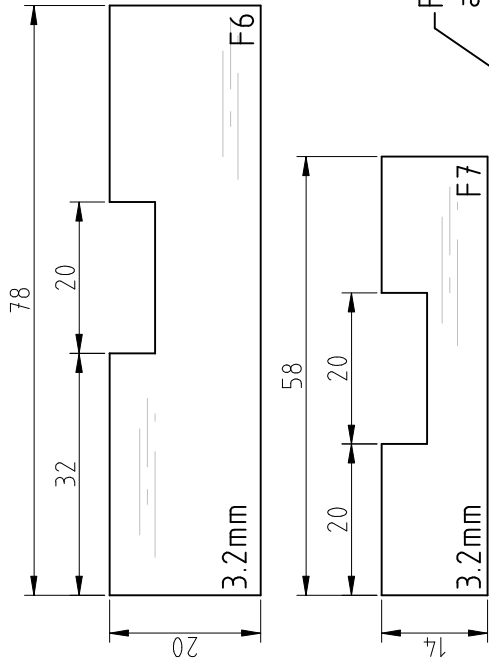
180

5

23

Fuselage s

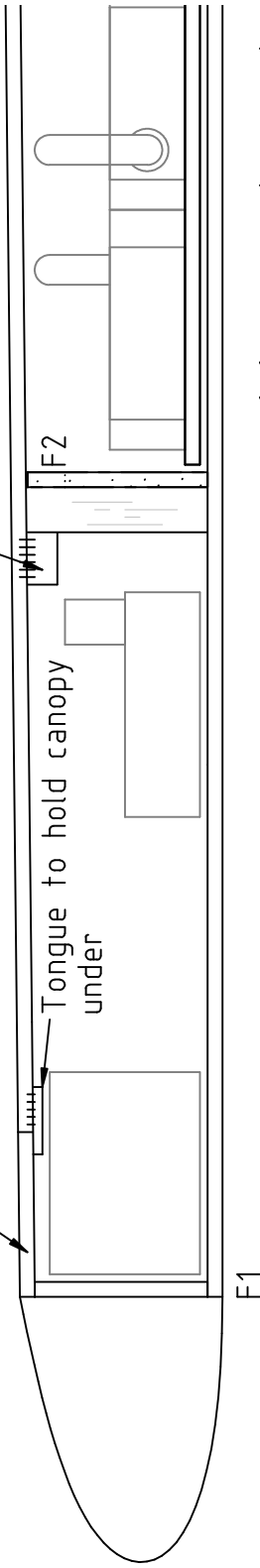
Grid (1 , 2)



Front portion of canopy affixed to fuselage

Canopy alignment block

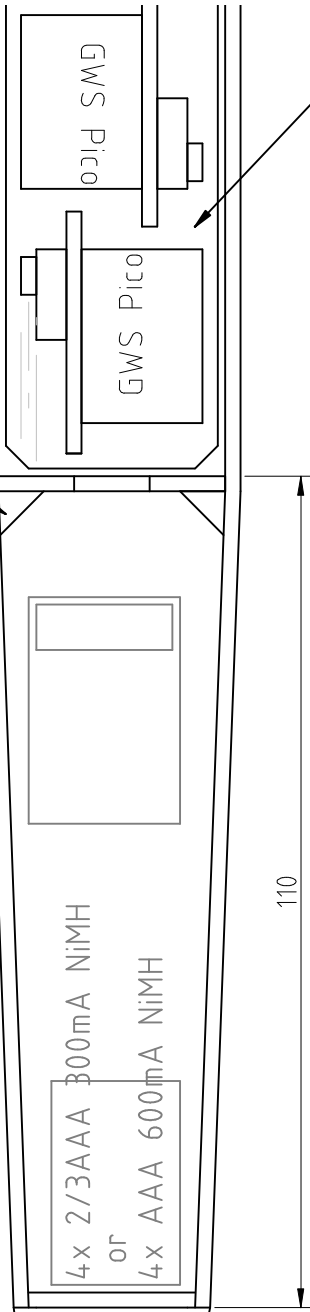
Tongue to hold canopy under



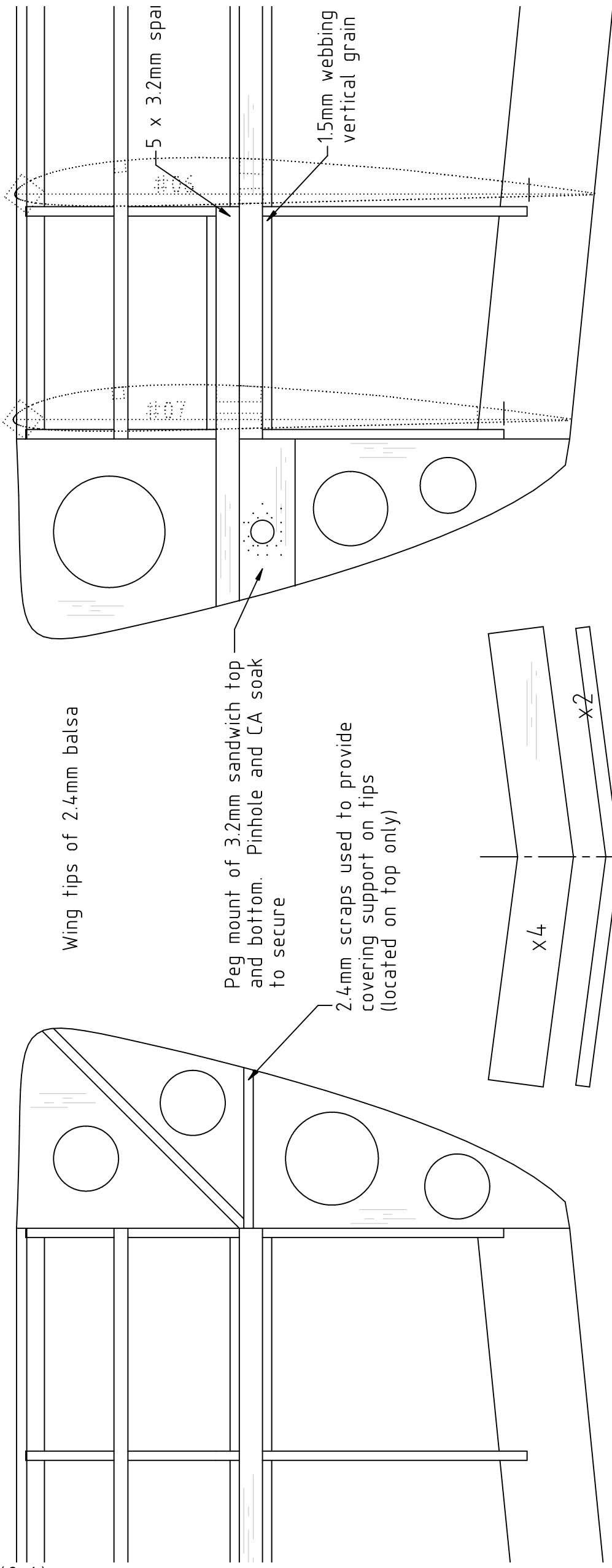
Fuselage can be covered in 2oz FG cloth for extra resilience

6x6mm support gussets

M4 Nylo



Solid balsa noseblock carve to shape.



Wing tips of 2.4mm balsa

Peg mount of 3.2mm sandwich top and bottom. Pinhole and CA soak to secure

2.4mm scraps used to provide covering support on tips (located on top only)

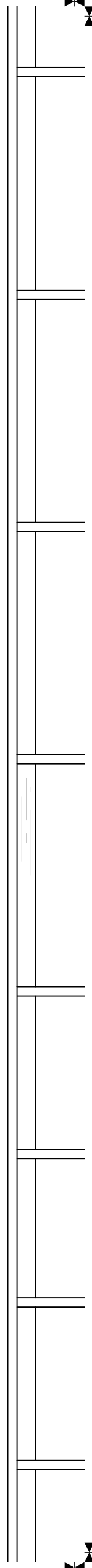
5 x 3.2mm spar

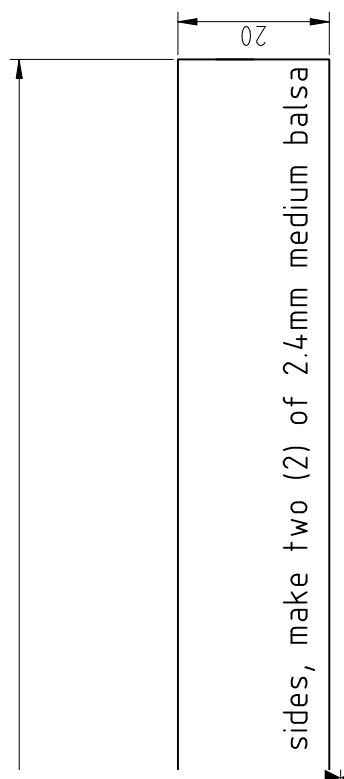
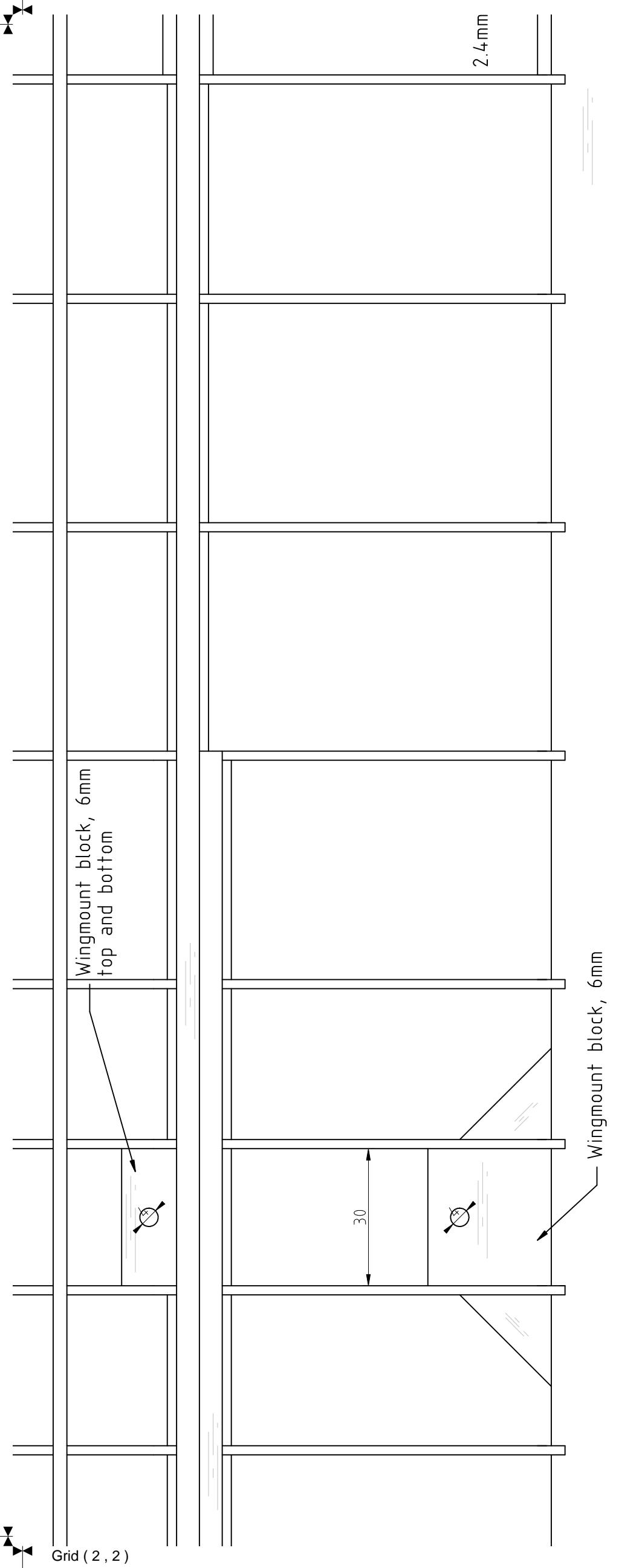
1.5mm webbing vertical grain

x4

x2

Use these braces to set the tip angle at 15°. Use the center brace as a spar cutting guide, the brace should butt against the rib sides.

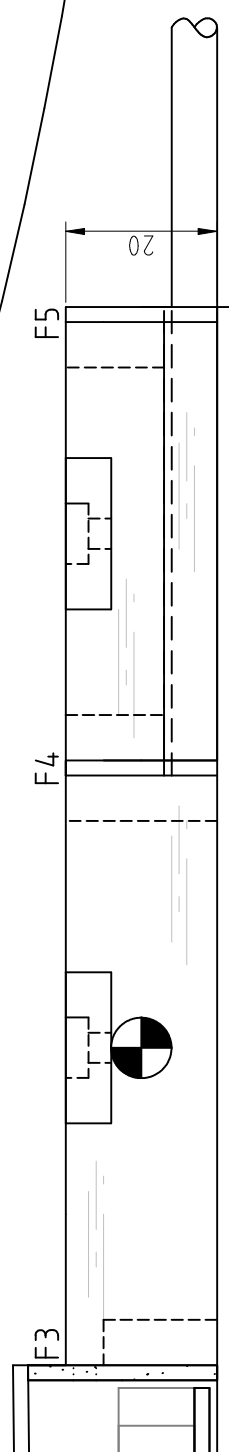
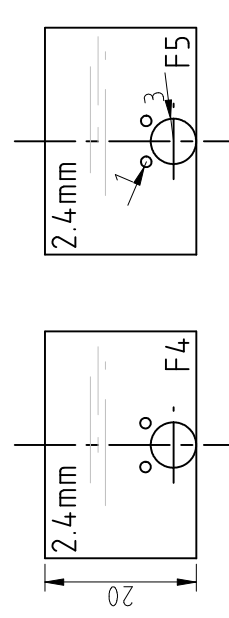
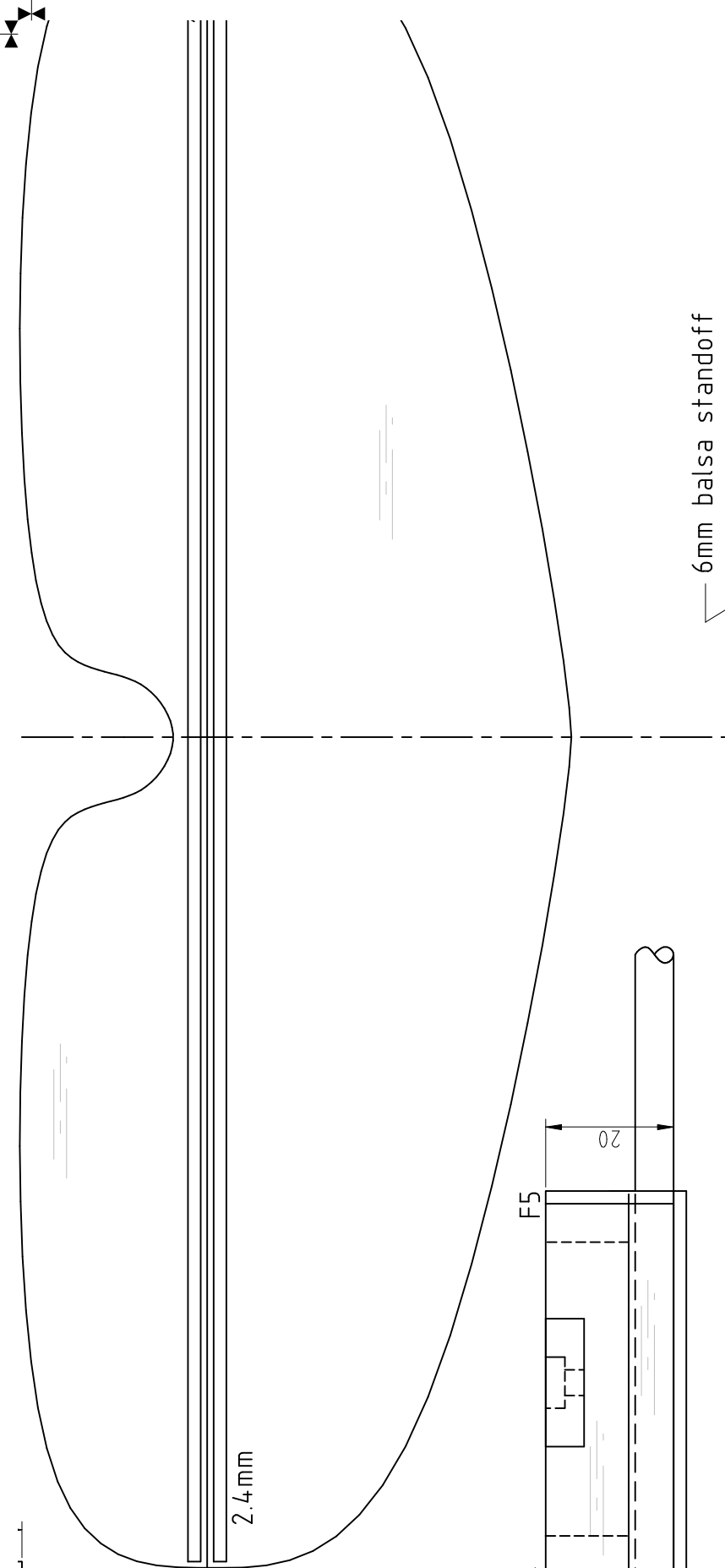




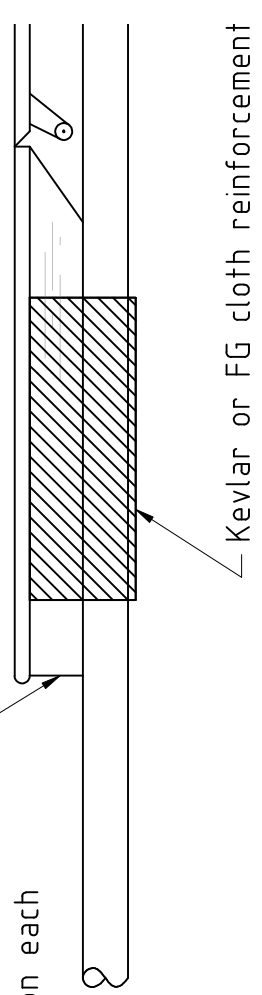
Feathers are cut from 2.4mm medium then planed and sanded down to shape and finally doped or glassed according to preference.

7 grams is the nominal expected tail mass.

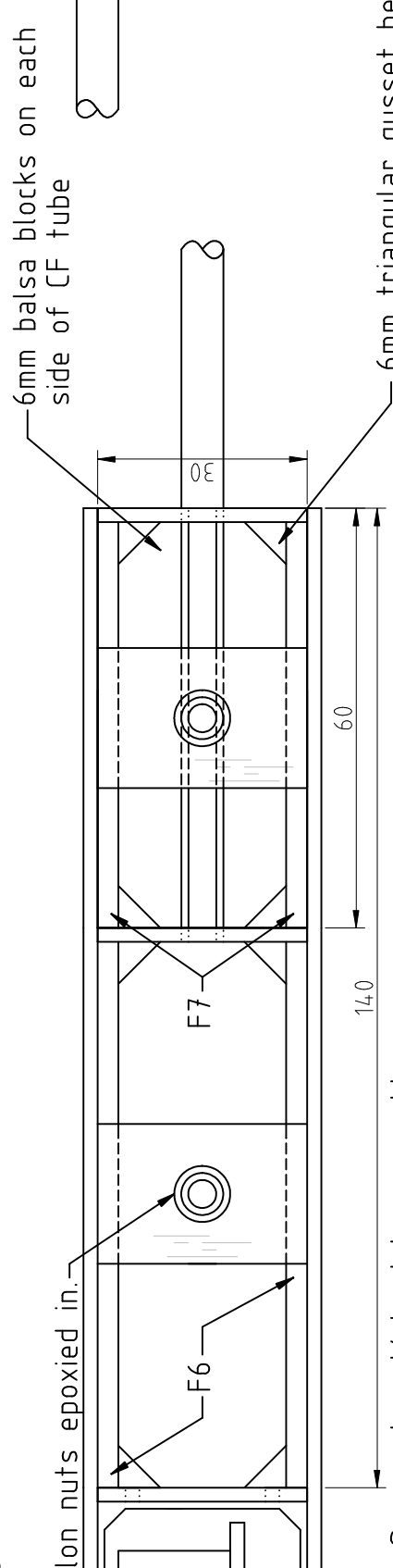
sides, make two (2) of 2.4mm medium balsa



s

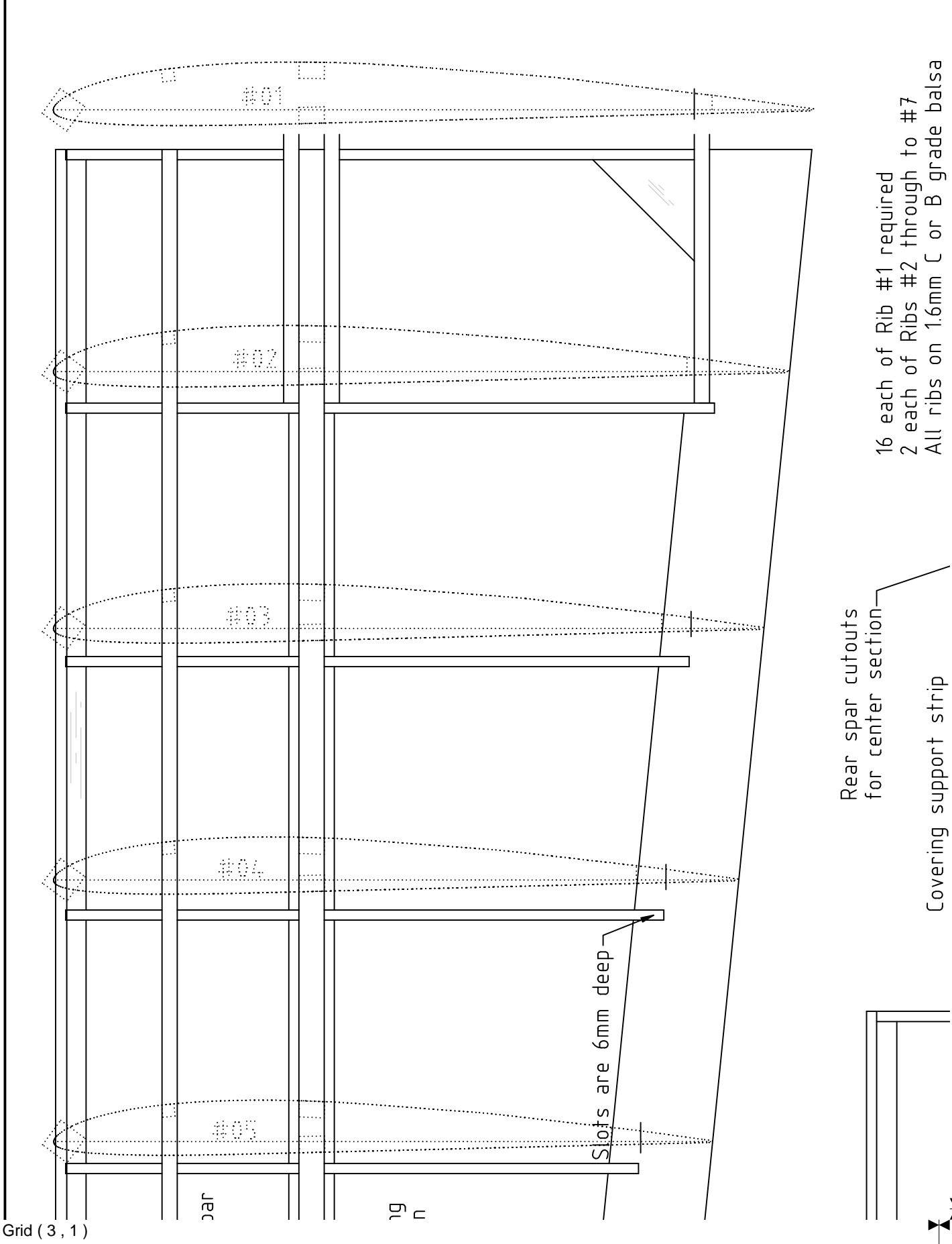


Cut CF boom to a length of 540mm



- Servos taped/glued to removable service plate

Grid (2, 3)

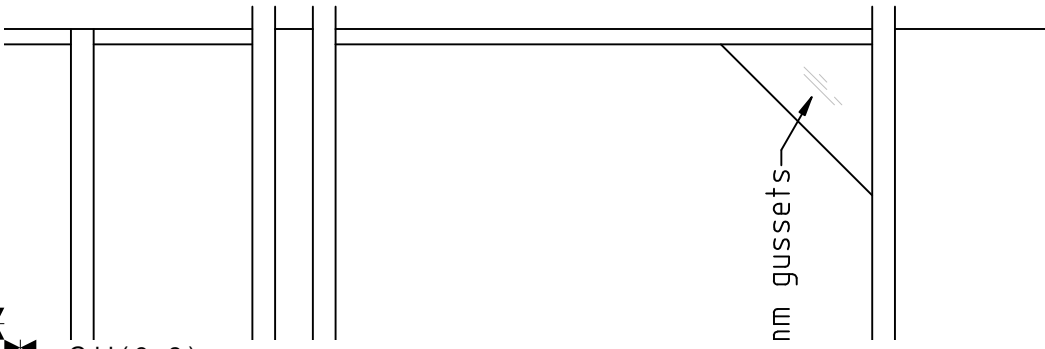


16 each of Rib #1 required
 2 each of Ribs #2 through to #7
 All ribs on 1.6mm C or B grade balsa





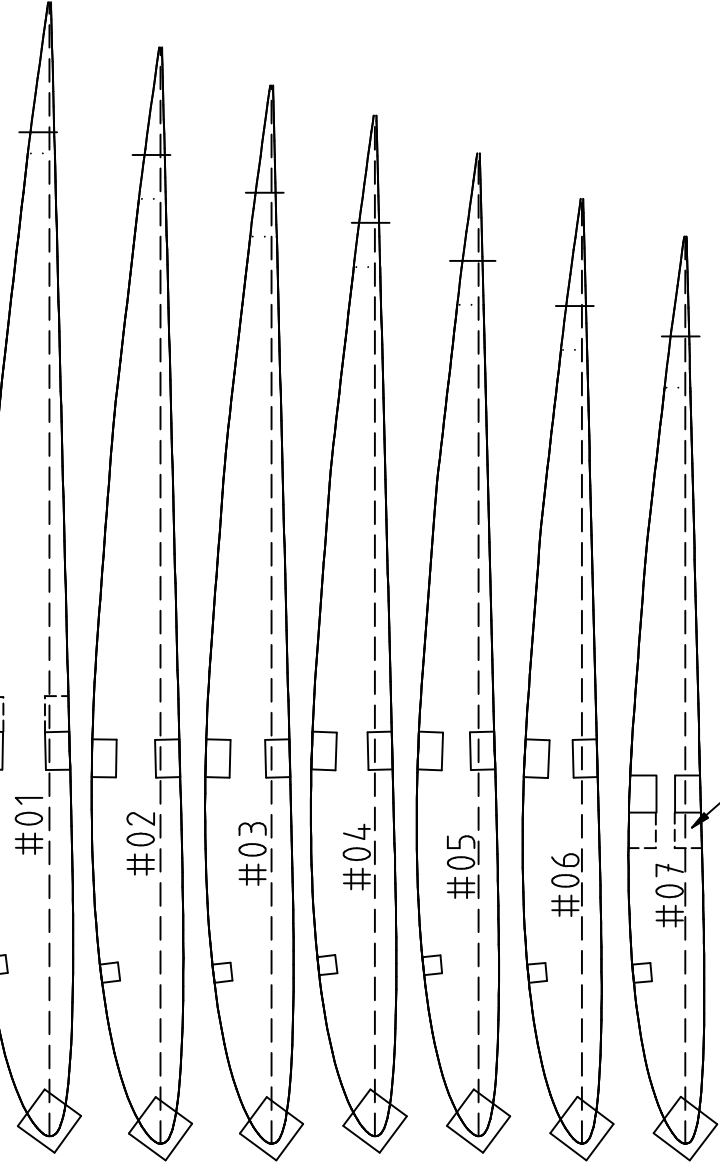
Grid (3, 2)



gussets

All ribs on 1.6mm L or B grade balsa

Covering support strip of 2.5 x 2.5mm balsa



#01

#02

#03

#04

#05

#06

#07

Wing leading edge of 6x6mm medium

Wing trailing edge of 20 x 3.2mm medium (plane down to shape)

Wing spars 5 x 3.2mm medium to hard balsa or spruce. Cap spars with 12,000 strand carbon tow/ribbon and CA.

Spar cutouts for throwing tip spar extensions.

CF rovings top and bottom

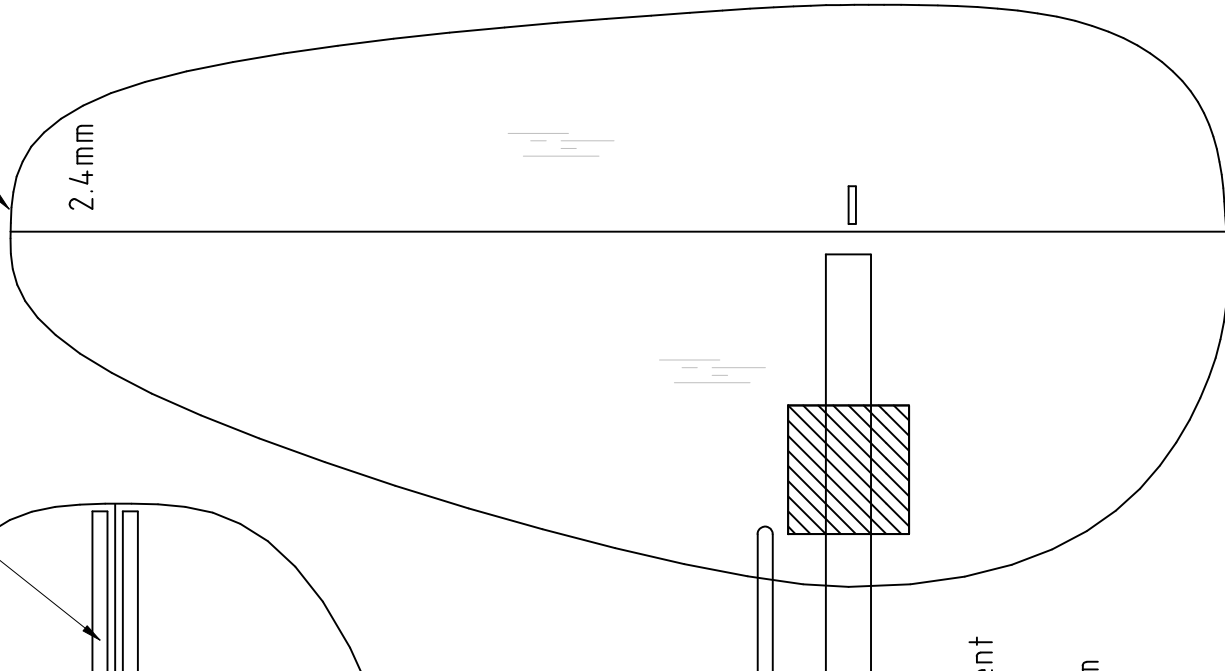
Tail hinges are thin clear nlastic tane



top and bottom
Tail hinges are thin clear plastic tape

Grid (3, 3)

2.4mm



QuickFlick-DLG

Target Weight: 170-190g / 6.35oz
Wing span: 130mm / 49"
Chord: 150mm / 6"
Wing area: 16.8dm.sq / 1.8 ft.sq

All balsa is medium grade unless otherwise specified.

Revision: 05,2005031401

Copyright © Paul L Daniels 2005
This plan can only be sold by PLDaniels.



<http://www.pldaniels.com/flying>
pldaniels@pldaniels.com